

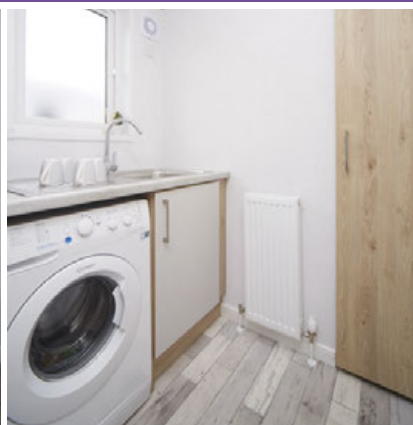
**NEW FOR
2020**



WISTERIA LODGE

2020 Collection

ATLAS
LEISURE HOMES



WISTERIA LODGE



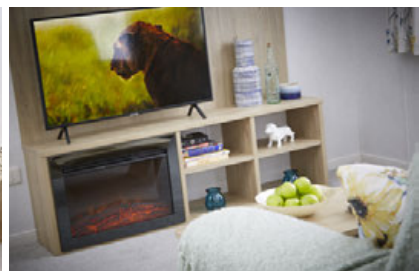
The Wisteria Lodge is the latest addition to the Atlas range. This 20ft wide model features twin front French doors which not only make a statement from the outside but create an expansive living space in the open plan lounge/kitchen and dining area.

The sense of space continues throughout with large main bedrooms, full size bath and a large en-suite shower to the master bedroom.

The Wisteria Lodge is completed with a utility room and generous storage space throughout.



Model illustrated 40 x 20 - 2 bedroom. Duvets, pillows, bedrunner, TV, DVD player, and all other ornaments are for display only.

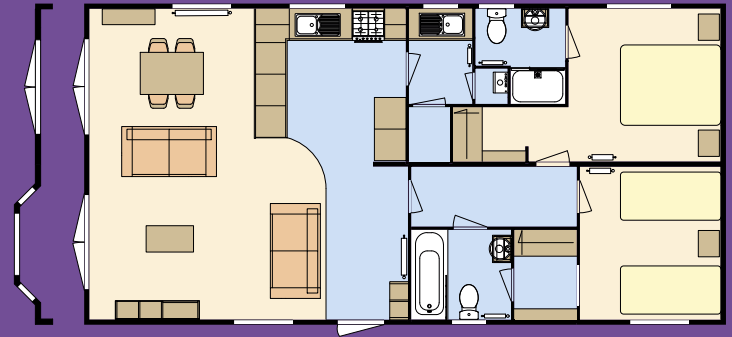


STANDARD FEATURE HIGHLIGHTS

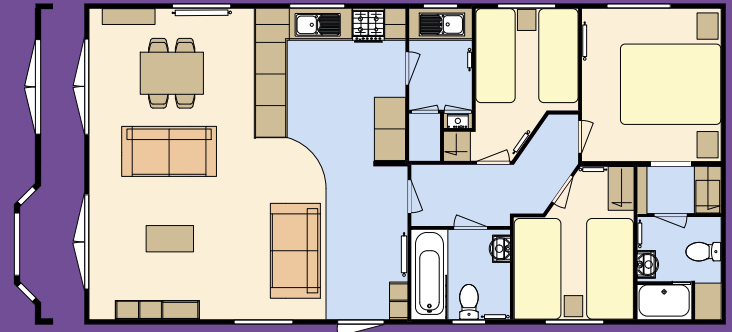
- Rigid vinyl cladding
- Exterior light
- Central heating
- Double glazing
- Extra insulation
- Pre galvanised chassis
- Twin French front doors
- Sockets with USB port
- Integrated microwave
- Integrated fridge freezer
- Cooker extractor hood
- Oven and 4 burner hob
- Utility room with space for washing machine
- Space for full size dishwasher
- Free standing dining table and chairs
- Full size bath in main bathroom
- Shower over bath in main bathroom
- En-suite to master bedroom
- Walk in wardrobes to main bedroom (twin on 2 bed)
- Extractor fans to both bathrooms

POPULAR SELECTED OPTIONS

- Upgrade to BS 3632:2015 specification
- Environmental colours, Canexel or timber exterior
- TV points to bedrooms
- TV point for wall mount TV in lounge
- Washing machine
- Dishwasher
- Downlighters to front
- Coffee table
- Deluxe bedding set
- Extra dining chairs
- Lounge stool
- Front bay to lounge

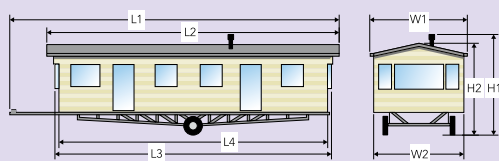


40 x 20 – 2 bedroom/4 berth



40 x 20 – 3 bedroom/6 berth

EXTERNAL DIMENSIONS & BED SIZES



Dimensions shown are for standard clad units only, please contact Atlas for dimensions of optional clad units.

External Dimensions	L1	L2	L3	L4	W1	W2	H1	H2
40' x 20' 2 bed/4 berth	13.274m 43' 6½"	13.061m 42' 10¼"	12.252m 40' 2¼"	12.252m 40' 2¼"	6.684m 21' 11"	6.172m 20' 3"	3.750m 12' 3¾"	3.750m 12' 3¾"
40' x 20' 3 bed/6 berth	13.274m 43' 6½"	13.061m 42' 10¼"	12.252m 40' 2¼"	12.252m 40' 2¼"	6.684m 21' 11"	6.172m 20' 3"	3.750m 12' 3¾"	3.750m 12' 3¾"

Bed Sizes	2' 6" x 6' 3" Single	3' 0" x 6' 3" Single	5' 0" x 6' 3" Kingsize
40' x 20' – 2 bed		●	●
40' x 20' – 3 bed	●	●	●

Atlas reserves the right to change any materials, fittings, etc., shown in this brochure at any time and without prior notice as supply or product development demand. All Atlas Leisure Homes are built to comply with all relevant British Standards and Codes of Practice as required by the National Caravan Council certification scheme.

NOTE: Caravan Holiday Homes are not designed for residential occupancy. To use an Atlas Leisure Home, it will need to be correctly sited, have steps or other means of entry and be connected to services (an appropriate propane gas supply, mains electricity to suit the required power offtake, mains water at a pressure to suit the appliances and a waste water/sewage outlet). Due to the nature of our construction methods and practices, it may not always be possible to match patterns precisely on some wallboards and fabrics. Any Park Operator, anywhere in the UK, can purchase an Atlas Leisure Home for you through the Atlas Dealer/Park Distribution Network. Due to the limitation of the print process we recommend that you see the actual products for colours. Photographs of Atlas Leisure Homes on location are for example only and may not have been sited at that location. Decking, patios, fences, barbecues, etc. have been used for illustrative purposes only. E&OE.

If you invest in an ATLAS Leisure Home, you can be confident that not only do you own the best in design, innovation and value for money but have also made a contribution to environmental sustainability.

V3/0120/2K



ncc



ATLAS
LEISURE HOMES

Atlas Leisure Homes Limited

Wiltshire Road,
Hull HU4 6PD
Tel: 01482 562101
Fax: 01482 566033

atlasleisurehomes.co.uk